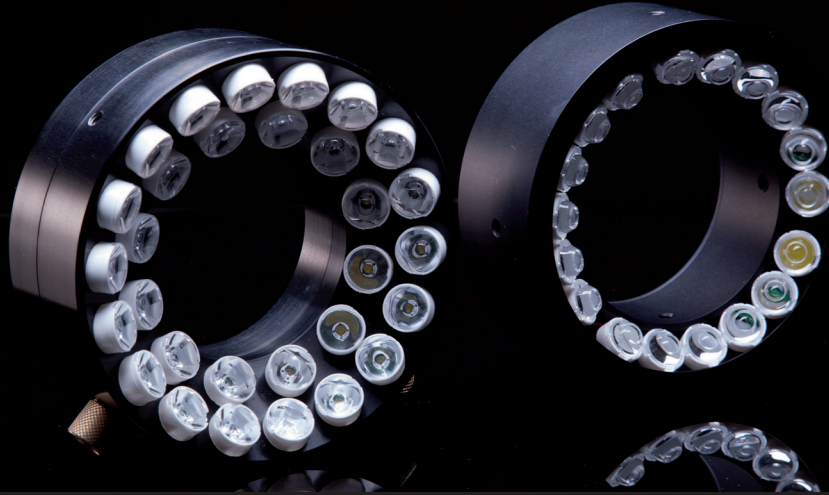


High Power LED

MULTILED R-SERIES



- For macro and microscopy
- Pulsed or continuous light
- White LED
- Option: color LED
- Perfect image quality
- Low heat radiation

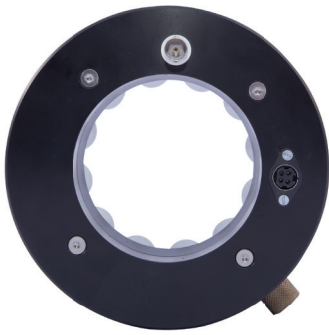
THE R-SERIES IS THE ULTIMATE SOLUTION FOR HIGH SPEED CAMERA **MACRO APPLICATIONS**. PERIOD.

MultiLed products cover all applications of high speed cameras and many applications in the machine vision market. Some family members e.g. cover sub microsecond exposure time, monochromatic light or give you enough light to fully close aperture at some microseconds exposure time. Designed from a decade of experience with thousands of customer projects in mind, MultiLed products offer ultra strong lighting at an affordable price.

MULTILED R-SERIES RING LIGHT - KEY FEATURES

- Several million Lux in the focus point. Depending on camera sensitivity, up to aperture 22 at 1 microsecond exposure can be achieved.
- Color LED for R100 only
- LED power is focused 50 mm from the front of the unit to a spot of 40*40mm. Other working distances on request.
- Inner diameter 78 mm, outer diameter 140 mm, height 70 mm incl. connectors. 2*standard 1/4" threads on the side (90° to each other)
- Passively cooled , 10 % duty cycle continuously or up to 2 min. operation at 100% power. Continuous operation with additional cooling module.
- BNC, TTL, pulse width controlled up to 30 kHz

R100 ALTERNATIVE LED TYPES (STANDARD: COLD WHITE 10.000 lm)			
Color	Med Wavelength nm	Luminous Flux lm	Radiant Flux mw
80 CRI White	Warm white	7.500	-
Royal Blue	455	-	25.200
Blue	475	2.500	-
Green	530	5.875	-
Amber	590	2.800	-
Red Orange	615	4.250	-
Red	625	3.550	-
Photo Red	660	-	20.160
Far Red	730	-	16.375



MULTILED R-SERIES

MULTILED R 200

Emitter	18 High Power Leds
Power Consumption	180W
Supply Voltage	24 Vdc
Bundled Power Supply	Standard Table PS 24 V 220 W
Luminous Flux	white, 18.000 Lumen
Power Connector	KYCON 4 pin
Heat Dissipation	passive or option: active cooling module
Environmental temp. (operation)	0-40° C
Environmental temp. (storage)	-15 -80° C
Overheat Protection	Thermo switch. Turns off power at 80°C and turns on when temp. below < 60°C.
Environmental Protection	as IP 20
Mounting Options	1/4" UNC 20, 90° to each other
Standard Lenses	15° full angle / round
Alternative Lenses	20°, 30°, 50°, 60°, 180°
Dimensions	Outer diameter 133 mm, inner diameter 84 mm, height 70 mm including connectors
Weight	950 g
Max frequency	30 kHz
Strobe	BNC TTL pulse width controlled
Rise / fall time	5,5 µs / 3 µs

MULTILED R 100

Emitter	30 High Power Leds
Power Consumption	150W
Supply Voltage	24 Vdc
Bundled Power Supply	Standard Table PS 24 V 150 W
Luminous Flux	white, 10.000 Lumen, less for color LED
Power Connector	KYCON 4 pin
Heat Dissipation	passive or option: active cooling module
Environmental temp. (operation)	0-40° C
Environmental temp. (storage)	-15 -80° C
Overheat Protection	Thermo switch. Turns off power at 80°C and turns on when temp. below < 60°C.
Environmental Protection	as IP 20
Mounting Options	1/4" UNC 20, 90° to each other
Standard Lenses	15° full angle / round
Alternative Lenses	20°, 30°, 50°, 60°, 180°
Dimensions	Outer diameter 140 mm, inner diameter 79 mm, height 75 mm including connectors
Weight	1,1 kg
Max frequency	30 kHz
Strobe	BNC TTL pulse width controlled
Rise / fall time	5,5 µs / 3 µs

